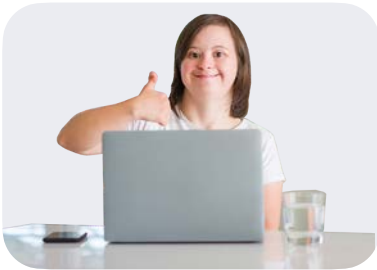




Michael Vermeersch



Michael is the Digital Inclusion Lead at Microsoft. This means he helps Microsoft make computer programmes that are good for disabled people.



Michael is **Autistic**.

Autistic people can have difficulty with communication, the way they cope in certain situations and mix with other people.



Michael set up the Disability Employee Resource Group at Microsoft.



This helped disabled workers at Microsoft. The company helped the group to grow.



In 2017 Michael was invited to 10 Downing Street to help the Government think about bringing more disabled people into work.



Twitter: www.twitter.com/miwon



LinkedIn: www.linkedin.com/in/michael-vermeersch

